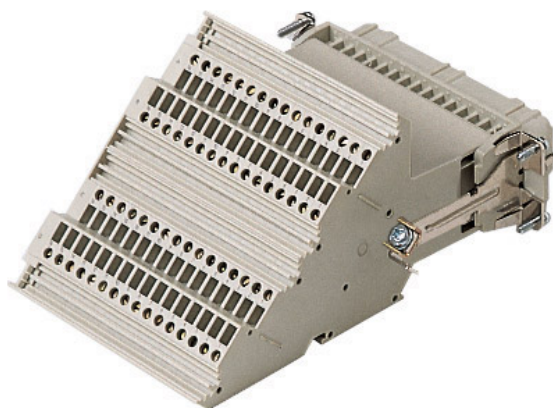








Product Sheet

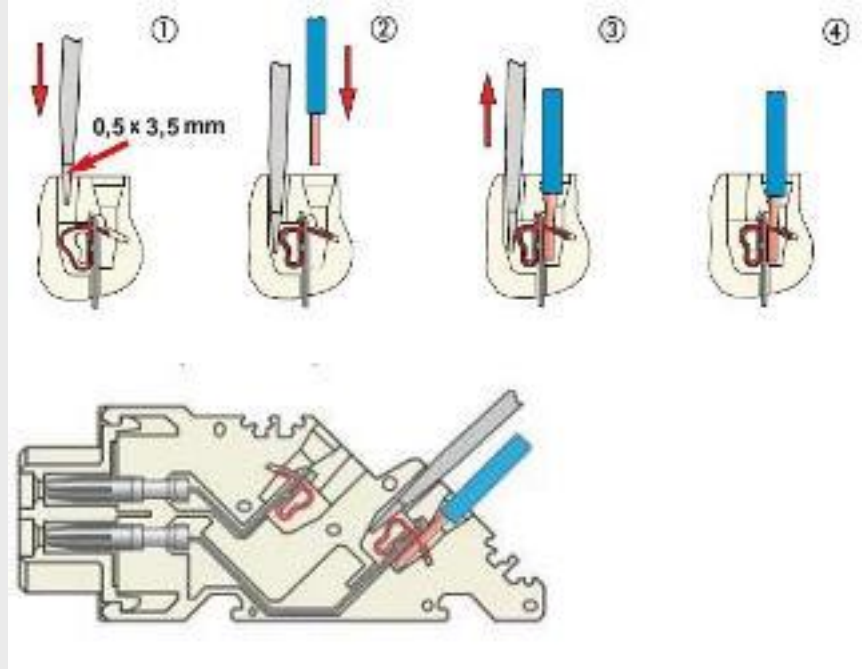
Part Number: CTSF 64 R



Family	CLASS insert series
Version	with terminal block, spring terminal connection
Series	CTS
Product type	with female contacts
Type	right side mounting
Model	female insert
Reference standard	EN 61984 (2001-11)
Contact type	silver plated
No. of poles	64 poles + 
Voltage (V)	250V
Current (A)	10A (A.C./D.C.)
Wire section	0,14mm ² - 2,5mm ²
Awg size	26 - 14
Quality mark	    

The information and the dimensions contained are not binding and may be changed without prior notice.
The drawing's dimensions are in mm.

IP degree of protection	degree of protection IP20 without enclosure, IP65, IP66, IP67 (EN 60529) and IP69K (DIN 40050 - 9) with enclosure
Fixing centre distance	size "104.27" only bulkhead mounted housing
Impulse withstand voltage	4kV
Pollution degree	3
Notes	<p>Spring terminal connection.</p> <ul style="list-style-type: none"> - CTSE spring inserts for section conductors: 0.14 - 2.5 mm² - AWG 26 - 14 - conductors stripping length: 9...11 mm



The information and the dimensions contained are not binding and may be changed without prior notice.
The drawing's dimensions are in mm.